

PACKPAPER HOUSE

Architectural Design for an Office Building

Client:	Mr Chirag Laddha (Shreepad Plastics Pvt. Ltd.)
Site Location:	B-191, Road No. 06 F, Udhana Udhyognagar, Surat
Plot Size:	1222 sq yards / 1022 sq m
Construction Area:	14,000 sq ft / 1300 sq m
Cost of Project:	Confidential
Year of Completion:	2014
Services:	Architecture, Interior Design, MEP Integration, Landscape, Artworks



THE PROJECT:

The client is a very well travelled person with good international exposure and he is one of the leaders and main suppliers in organized paper business in the city of Surat because of the various industries that need a lot of paper for packing materials, catalogs etc. He came to us with this plot in a hardcore industrial area and nothing to look around. But he wished to have a place where he would certainly enjoy working.

THE SITE:

Located in a typical characterless govt. industrial estate, the site surely has nothing to look at outside. The site is rectangular and after leaving the necessary setbacks whatever was left, was to be constructed.



THE OASIS IN THE DESERT

"I want a lotus to bloom in the mud"- these words from the client, he gave us a clear indication of the starting point in design. Due to its bland site location and no pleasant view around, the core idea was to create a building that interesting as well as with a tranquil environment within. We came up with a bold form finished expression of the building with minimal windows, emphasising the point. We decided to do the project which is more inward looking and considering his exposure, we tried to give him something that is Functional, Flexible and Timeless.

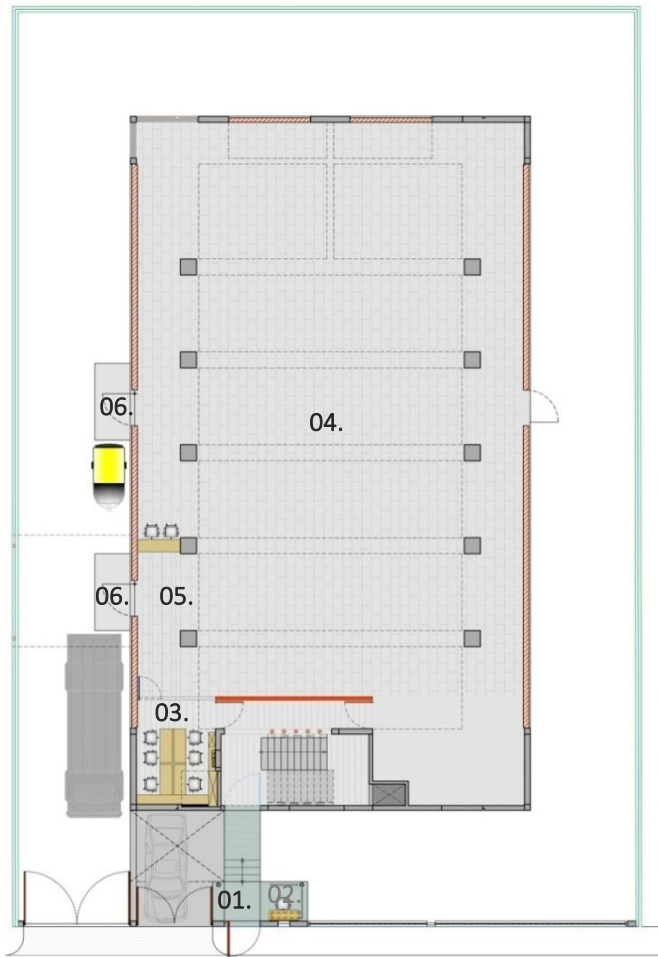
DESIGN INTENT

1. FLEXIBLE

2. INTROVERT

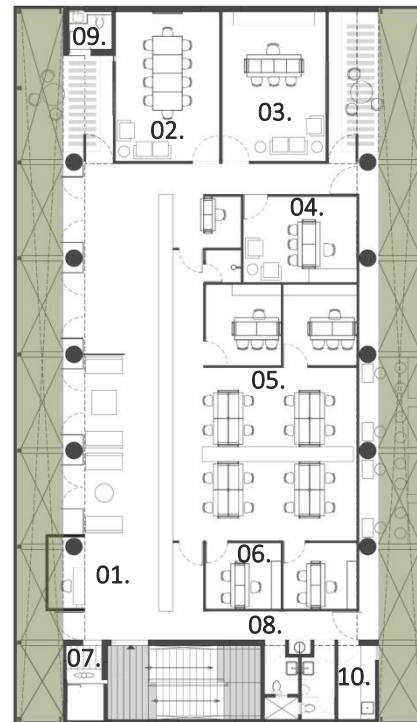
3. TIMELESS

4. VIBRANT



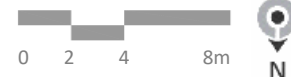
- 01. Entry
- 02. Security
- 03. Warehouse In-charge's Cabin
- 04. Warehouse
- 05. Checking Desk
- 06. Loading / Unloading area

GROUND FLOOR PLAN



- 01. Reception
- 02. Conference room
- 03. Director's Cabin
- 04. Family Member Cabin
- 05. Marketing Section
- 06. Account Section
- 07. Puja room
- 08. Toilets
- 09. Executive toilet
- 10. Pantry

FIRST FLOOR PLAN





01. FLEXIBLE- LINEAR GARDENS



01. FLEXIBLE- DIRECTOR'S CABIN

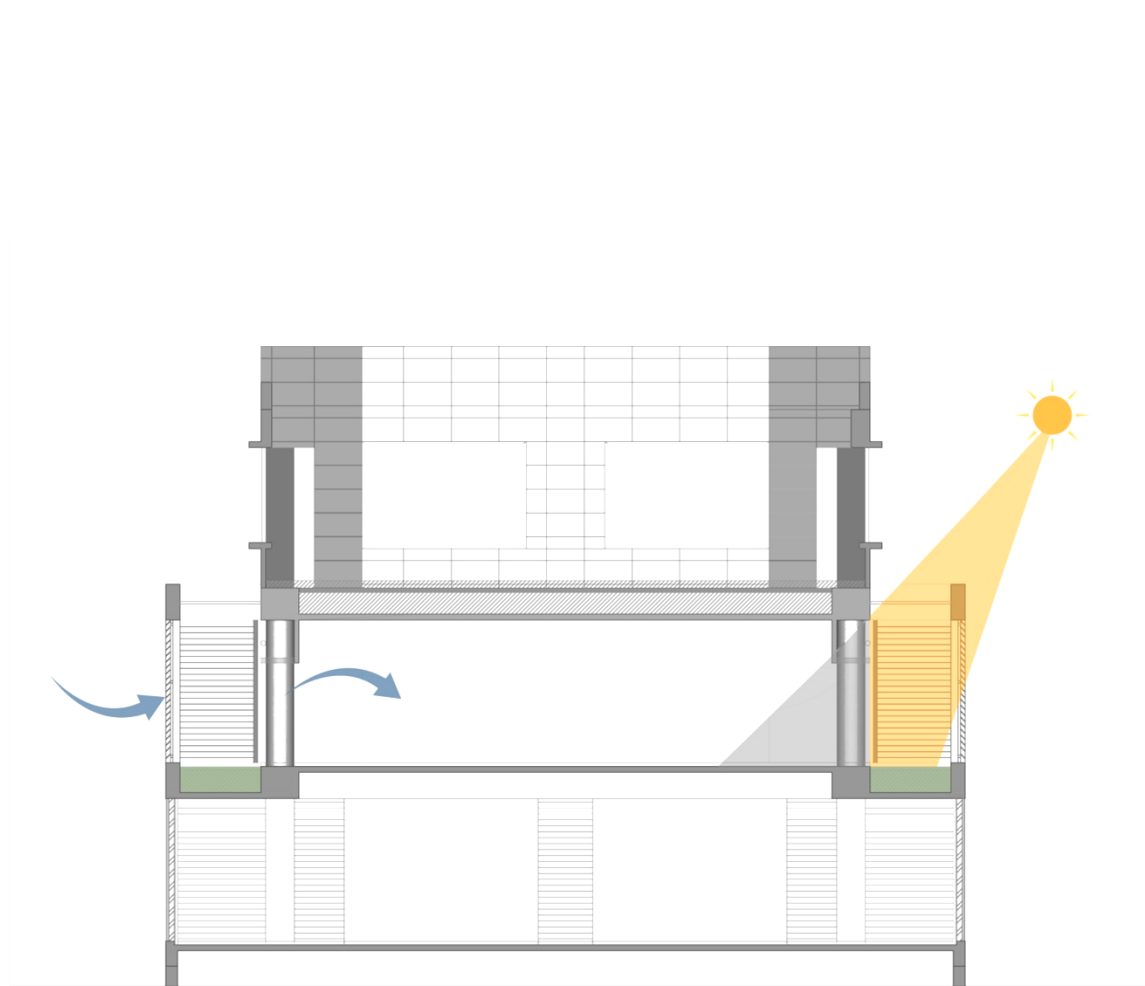


01. FLEXIBLE- DIRECTOR'S CABIN

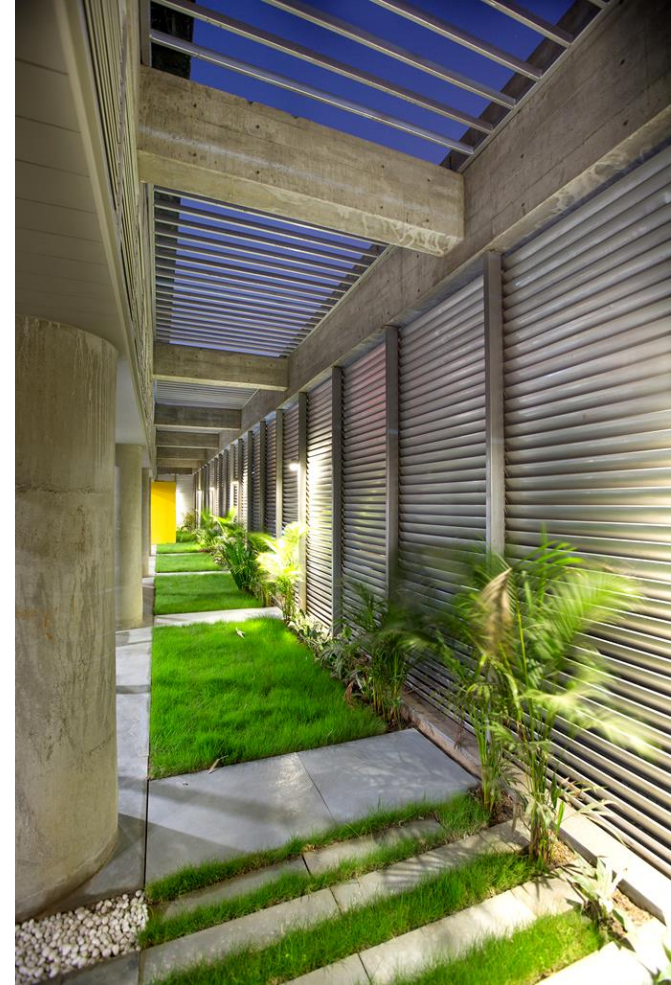


01. FLEXIBLE- MARKETING SESSION

The louvers and pergolas in the two linear garden spaces, help in visual screening, sun shading, wind flow and also act as spill out spaces. The floors are stacked on each other similar to the first floor plan. The godown needed as much space as possible and thereby the office took the upper floor. The requirement of the office was not as much so we took the liberty of creating linear gardens on the two sides of the first floor so that every space looks into a green space. The design is such that a lot of natural light is coming through the linear gardens on both the sides.



02. INTROVERT- LOUVERS AND PERGOLAS



02. INTROVERT - LOUVERS AND PERGOLAS



The space is visually a singular and column- free space which flows seamlessly into various activity areas and the landscape areas making the space seem immensely relaxed and open. The divider between the staff area and the reception is a long furniture unit taking care of all the possible storage needs of the administration.

02. INTROVERT- COLUMN FREE



02. INTROVERT- CONFERENCE ROOM



FORM FINISHED
CONCRETE



POLISHED KOTA
STONE



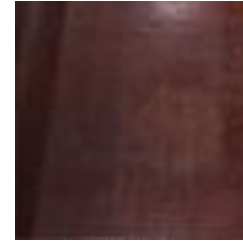
COLOURFUL
FABRICS



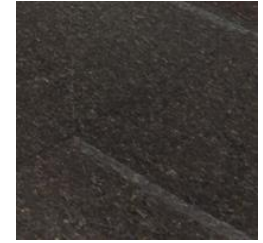
STAINLESS STEEL



GLASS



POLISHED
PLYWOOD



BLACK GRANITE

The material palette of the office is very basic with form-finished walls and ceilings, polished Kota stone floor and very minimal furniture made from polished plywood, glass, stainless steel and black granite. The materials are bare, with optimal usage of the same. This creates a very serene and neutral basis which is then splashed with vibrant colourful fabrics in partitions. The bright ochre reception cubicle welcomes you as you step into the office. More expensive stones are used on table tops of director's cabin. The furniture has been limited to bare minimum so that the office looks spacious.



03. TIMELESS- THE NORTH EAST FAÇADE



03. TIMELESS- RECEPTION AREA



03. TIMELESS- SAMPLE SELECTION AREA



03. TIMELESS- FAMILY MEMBER'S CABIN



One of the first object that comes to mind when one thinks of paper crafts is the humble pinwheel. Most of us have spent endless hours gazing at this simple yet fascinating toy during our childhood years and looking at them, still fills us with that child- like glee.

04. VIBRANT- 'THE PINWHEEL BOUQUET'



This artwork shows a tree in the autumn season with its beautifully colored leaves flying off in the wind. The scattered leaves add color and life to the space.



The executive office includes the artwork made out of various standard sizes of paper and it is phonetically and graphically well composed to create a piece of art.



Adding color and vibrancy to the space, the artwork is inspired by several paper screens/ layers painted with color sprays giving it various textures .



• SURAT • AHMEDABAD • HYDERABAD


ESSTEAM DESIGN SERVICES LLP

contact us

office.essteam@gmail.com | +91 99090 16610

visit us

 www.essteam.in

 www.facebook.com/EssTeam

 www.instagram.com/studio_essteam/

4th Floor, 'Samanvay', Near Chandni Chowk, Piplod, Surat – 395007 INDIA.

